

Corydon Post Office



Corydon's first post office was destroyed by the 1918 flood. According to a local newspaper, "Frank Kennedy's post office building washed down stream by two hundred yards. Mrs. Kennedy, the postmistress, moved her stamps and records into the O. and J. Tome store a few hours before the flood come."



The final day of operation for the Corydon Post Office was March 29, 1963. As reported by the *Warren Times Mirror*, "The village of Corydon is scheduled to be inundated by the waters of the Allegheny Dam and Reservoir."

Warren County Historical Society

210 Fourth Avenue

Warren, Pennsylvania 16365

(814)723-1795

<https://www.warrenhistory.org>

Like us on Facebook and Follow us on Instagram

Warren County Early Post Office History

Scandia Post Office



One of the earliest stores in Scandia, located behind the Scandia Church on Scandia Road, was owned and operated by Charles Forsberg and Charles Anderson in the 1870s. The Scandia Post Office was located in the store from the 1880s through 1917, and then moved to Russell when rural free delivery was instituted by the government.

Sugar Grove Post Office



Sugar Grove's First Post Office, known as David Brown's House, was completed in 1817, served as an office for the Holland Land Company, as well as the post office and church. Robert Falconer imported wallpaper from England for the room he sometimes occupied.



Sugar Grove stage about to depart with the mail. Records indicate that the post office occupied the same site for over 100 years.

Lander Post Office



The Lander Post Office was housed in the back of this store, first operated by R. E. Miller and brother, followed by David J. Mahan, as the sign indicates. The store operated from approximately 1865 to sometime in the late 1940's.

Russell Post Office



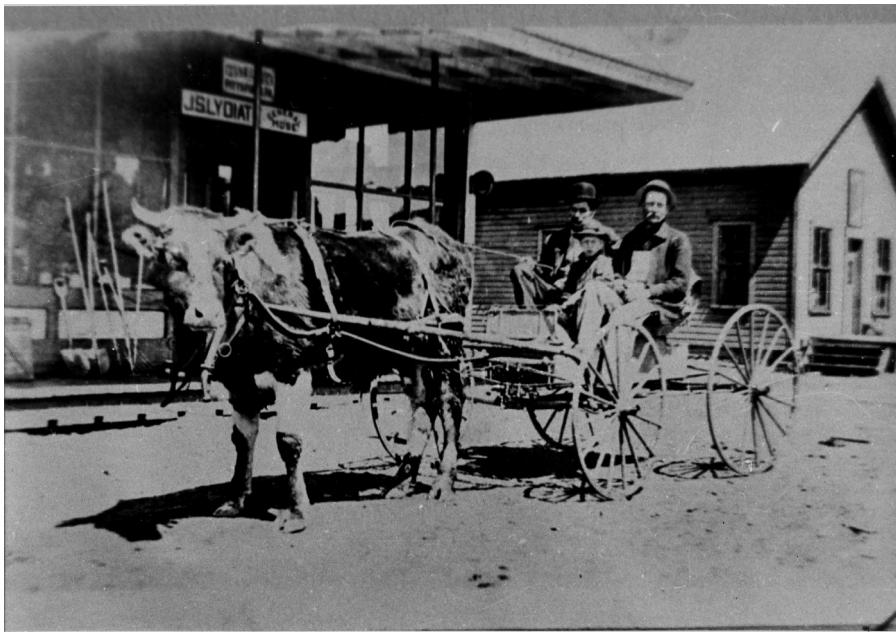
Originally known as the Conewango Post Office, established June 20, 1828, with Nathaniel A. Lowry as postmaster. On February 2, 1835, the post office and village were renamed Russellburg, and on October 31, 1882, both were renamed again and became Russell.

Pittsfield Post Office

Known initially as "Corners," James Acock petitioned for the Pittsfield post office sometime after 1826, serving as postmaster for over 20 years.



Pittsfield Hotel and Post Office, circa 1908. The hotel burned to ashes on August 25, 1910.



This image shows the Pittsfield Post Office with Perry Nicols ox in front, 1912.

Tidioute Post Office



The earliest record of postal activity in Tidioute was the Parshall residence located at the mouth of Gordon Run, which also served as an election house. Samuel Parshall collected and dispatched letters sending them by stage coach or horse back to Meadville and Warren.

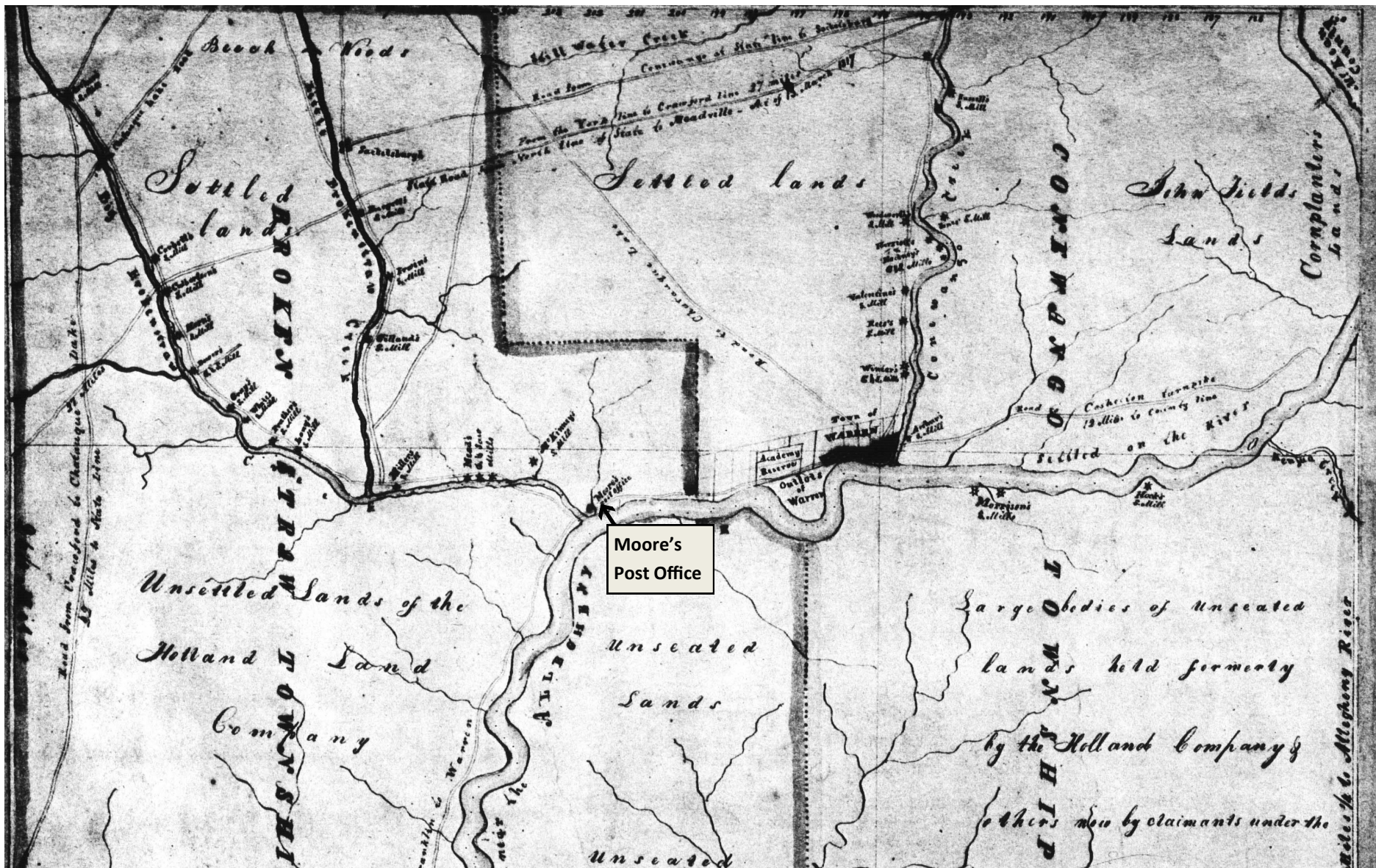
The Tidioute Post Office was first created in 1844, when Levi Brigham was named postmaster. The town was known as Deerfield until 1862 when the borough was incorporated. In 1886, the Grandin brothers established a post office in Deerfield Township.

In 1890, the post office was located in the Fuelhart building, later becoming Lawrence Hardware.

After the turn of the century, it was relocated to the Dawson building, later known as Druggan Hardware. The photo pictured.

In the 1930s, the post office was moved to the three-story brick structure in the center of what was then the business section at 98 Main Street, until December 1962, when the new post office building was constructed in colonial architecture style.

1817 Warren County, Pennsylvania Map — Moore's Post Office in Irvine



According to the archives, Warren County's first post office, was established on April 17, 1815, with Andrew Coburn serving as Postmaster. Robinson R. Moore was appointed Postmaster on December 29, 1816, and, as this 1817 map notes, "Moore's Post Office" was located in, what is today known as Irvine, and was officially known then as "Broken Straw."

On December 4, 1819, Archibald Tanner was appointed Postmaster and the post office was renamed Warren. Archibald Tanner's store, located where Warren's Soldiers and Sailors Monument is today, was built in 1816 and thought to be Warren Post Office's new location around the time of Tanner's appointment.